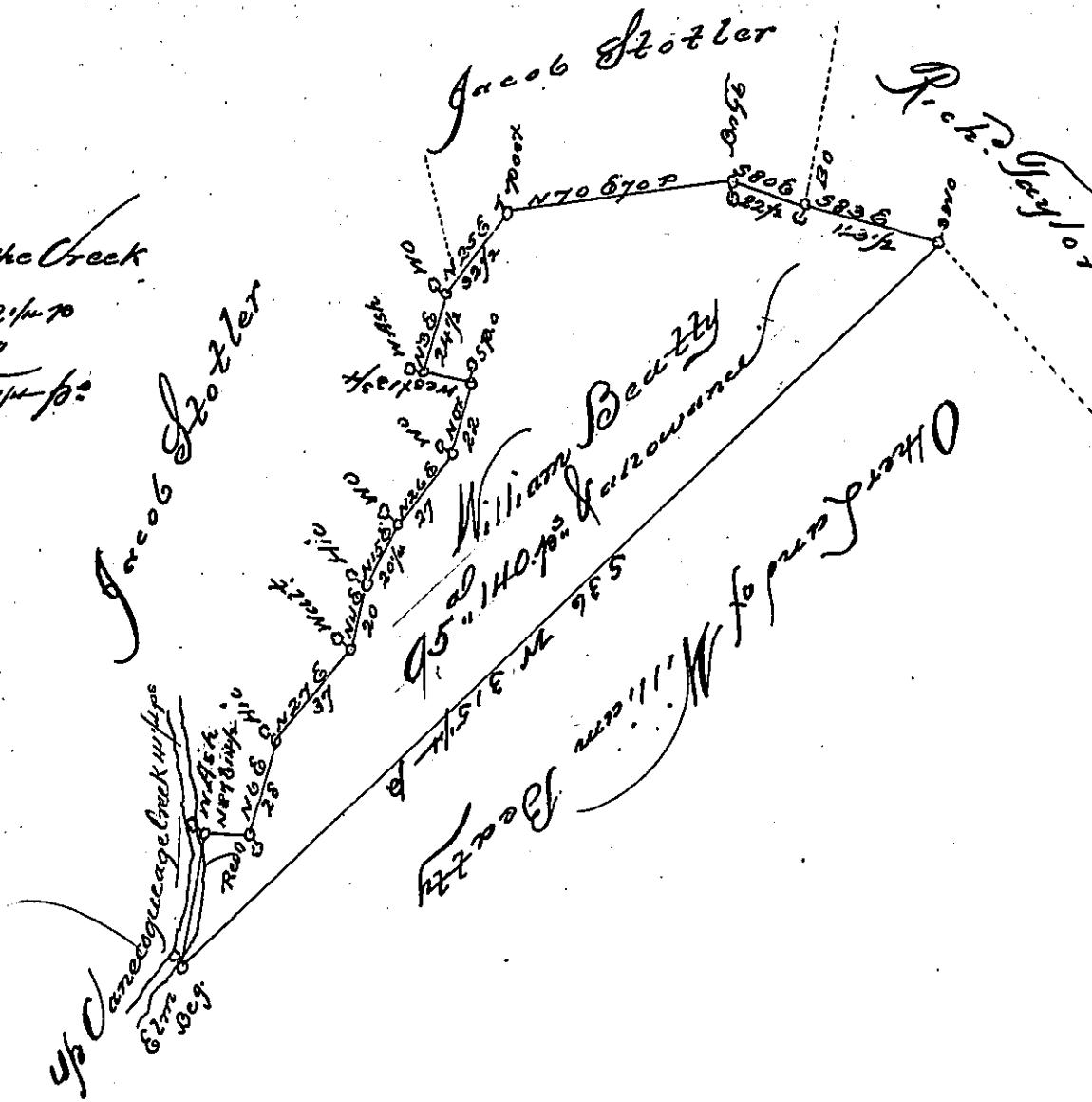


Courses on the Creek

N. 18 E 22 1/4 70
N. 20 W 19
41 1/4 60



A Draught of a Tract of Land Situate in Anttrim Township in the County of Frank-
lin containing Ninety five Acres and 140 perches and an allowance proportional to
six p. Cent for Roads &c. Survey'd June 12th 1786, in pursuance of a war-
rant granted to William Beatty bearing date the 1st day of July 1784.

Matth^w Henderson D. J.

To John Lathams Esq^r
Surveyor General

To Daniel Prothead Esq^r
Surveyor General

IN TESTIMONY that the above is a copy of the original remaining on file in
the Department of Internal Affairs of Pennsylvania, made
conformably to an Act of Assembly approved the 16th day of
February, 1833, I have hereunto set my Hand and caused
the Seal of said Department to be affixed at Harrisburg,
this first day of March, 1904

Joac^o P. Brown
Secretary of Internal Affairs.